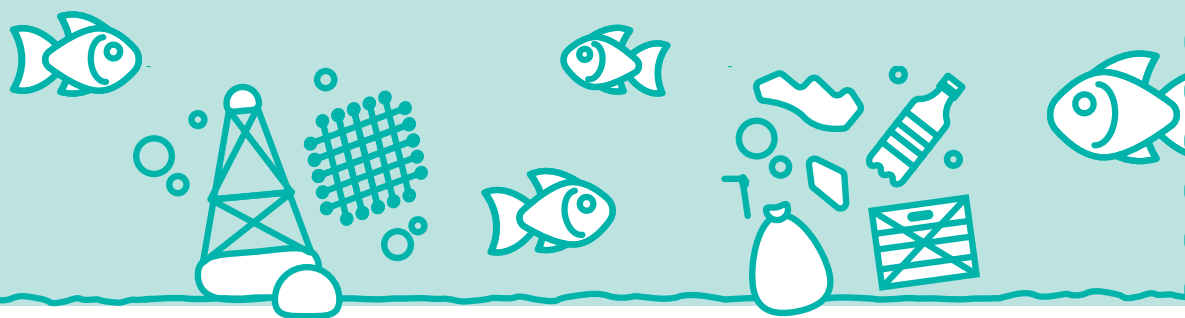


MARINE LITTER AND AQUACULTURE GEAR MANAGEMENT

Two main sources of plastic used in aquaculture account for more than **35 different plastic materials** which end up in the environment



Aquaculture gear

nets, cage components, buoys, pond liners, abandoned, lost and discarded fishing gear (ALDFG) etc.

Plastic tools and materials

bags, bottles, trays, buckets etc.

Problems caused by marine litter and aquaculture gear in the aquatic environment:

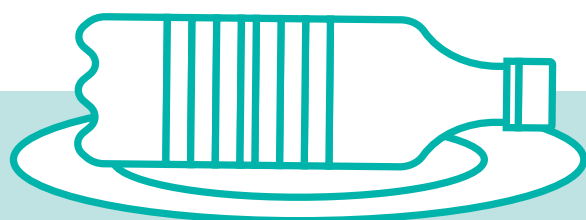
Ingestion by animals

Entrapment and entanglement of animals

Physical impact on the benthos

Disruption and loss of coastal areas

Human exposure to microplastics and chemicals through the food chain



Reinforce current farm waste management indicators with specific criterion on marine litter and aquaculture gear management



5 R's (reduce, re-use, recycle, recover, refuse)



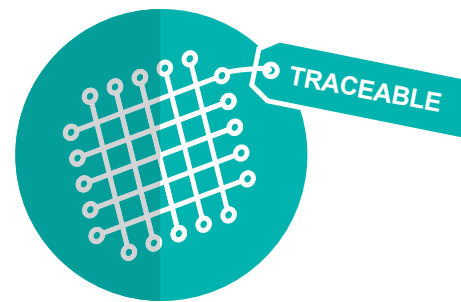
Develop scientific knowledge on the impacts of aquaculture gear and plastic waste mismanagement and provide practical solutions



Alignment of proposed criterion with SDG14 (Life below water) Practical solutions



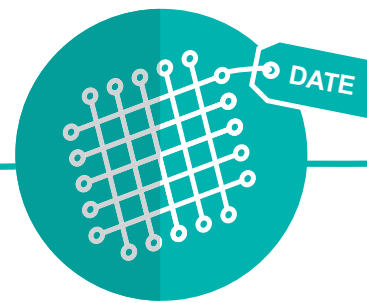
Practical Solutions:



Traceability system (coding aquaculture gear and provide master list)



Video linked to GPS coordinates



Control and record plastic retention devices at the effluent or discharging point



Proper disposal of aquaculture gear and plastic material after use